



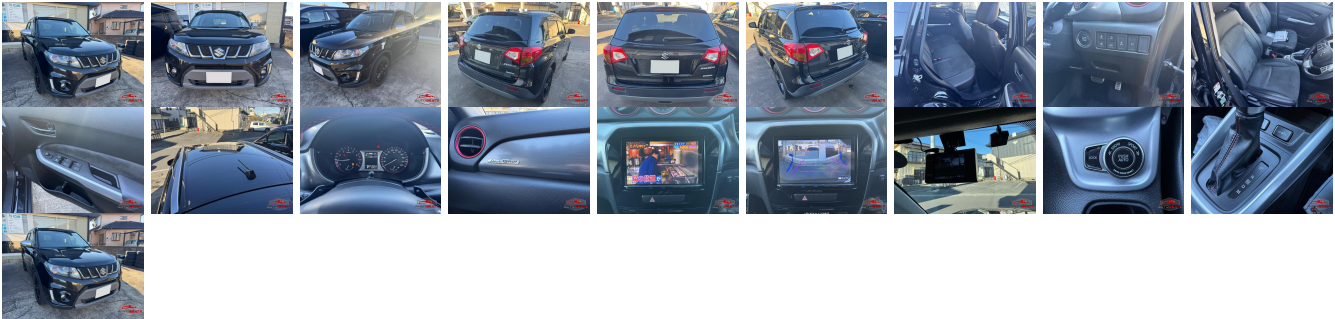
Vehicle Information

AB-7707

Suzuki

First Registration Year: 2017-03
Manufacture Year: 2017-03

| | | | | | | |
|---------------------|--------|--------------------|----------------|-------------------------|-----------|------------------|
| Model: | Escudo | Chassis No: | YEA1S-0024**** | Transmission: | Automatic | Exterior: |
| Grade: | 4.5 | Engine: | | Mileage: | 50,123 | Interior: |
| Fuel: | Petrol | Seats: | 5 | Engine Capacity: | 1,400 | |
| Drive Train: | 4WD | | | Color: | Black | |



Vehicle Options:

| | | | |
|------------------|------------------------|----------------|--------------|
| Pwr Steering | Pwr Wind | Pwr Mirrors | Center Lock |
| Air Cond | Reverse Camera | Pwr Slide Door | Easy Closer |
| Cruise Control | ABS | Air Bag | Fog Lamps |
| HID Head Lamps | LED Head Lamps | Spare Key | Remote Key |
| Push Start | Seat Heater | Pwr Seat | Leather Seat |
| Floor Mat | Sun Roof | Alloy Wheels | Grill Guard |
| Rear Wiper | Rear Spoiler | Stereo | Navi/TV |
| Car CD | Car MD | AUX | Spare Tire |
| Spare Tire Case | Puncture Repairing Kit | Tool | Jack |
| Operators Manual | Maint. Record | | |

\$8,500